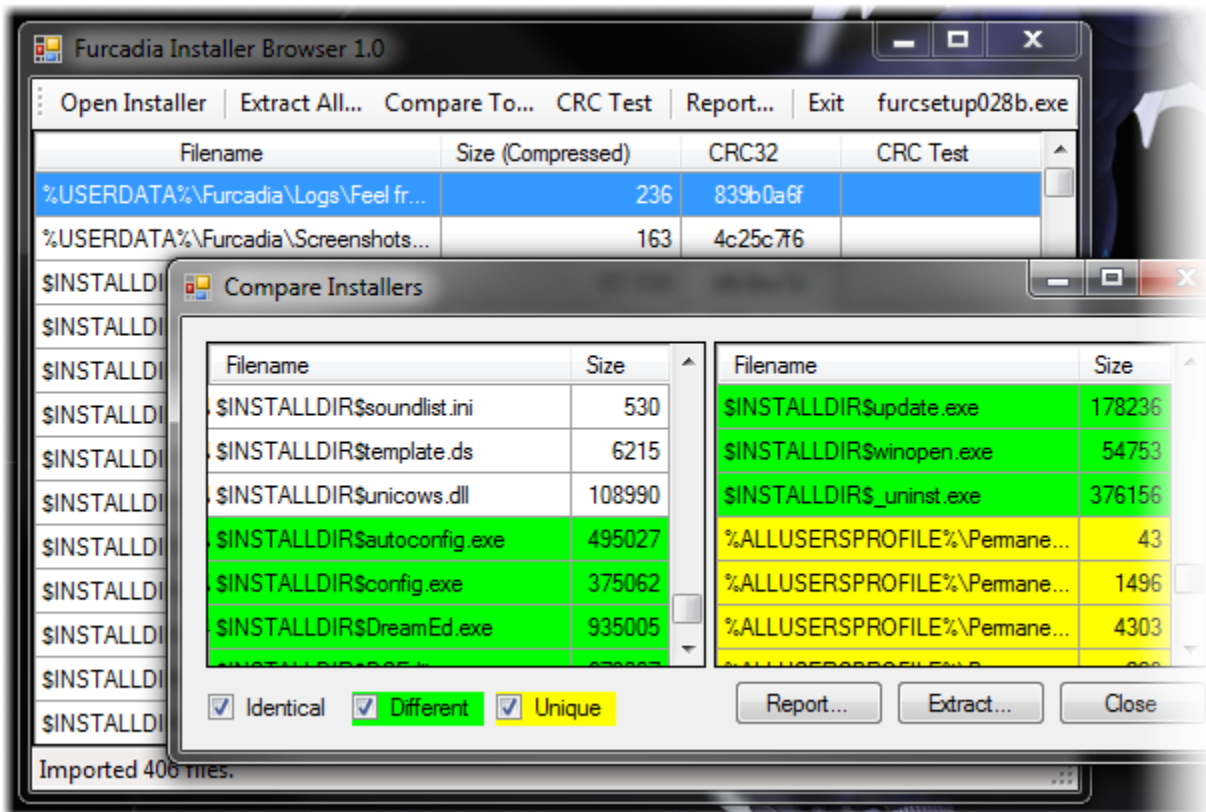


# Furcadia Installer Browser



## Overview

FIB is a .NET2.0 application that can access the files within a Furcadia installer and allows you to:

- See what files does the installer contain and optionally, sort the list by name or file size.
- Open single files from within the install package - double-click a file in the list and it will open in a program associated with it.
- Extract selected files (or all of them) from within the install package.
- Check for corrupted files within the install package by validating their CRC checksum.
- Comparison between two installers:
  - Compare the contents of two Furcadia installers and see the difference between them.
  - Extract only the different files from within both installers.

This program is intended for Furcadia technicians and can prove to be helpful during beta testing of new Furcadia releases.

## System Requirements

This program uses Microsoft .NET Framework version 2.0 or higher in order to run. Therefore, any computer that can run .NET2.0 executables will be able to run this application. Windows XP (Service Pack 3) and higher already have .NET Framework installed, so you most likely don't need to download anything else to run this.

FIB can also run on Linux Operating Systems through mono (<http://www.mono-project.com/>).

Spec-wise, the faster computer you have - the better. There is no real limitation to this program, so if you can run .NET applications in general, you will be able to run this one reasonably well.

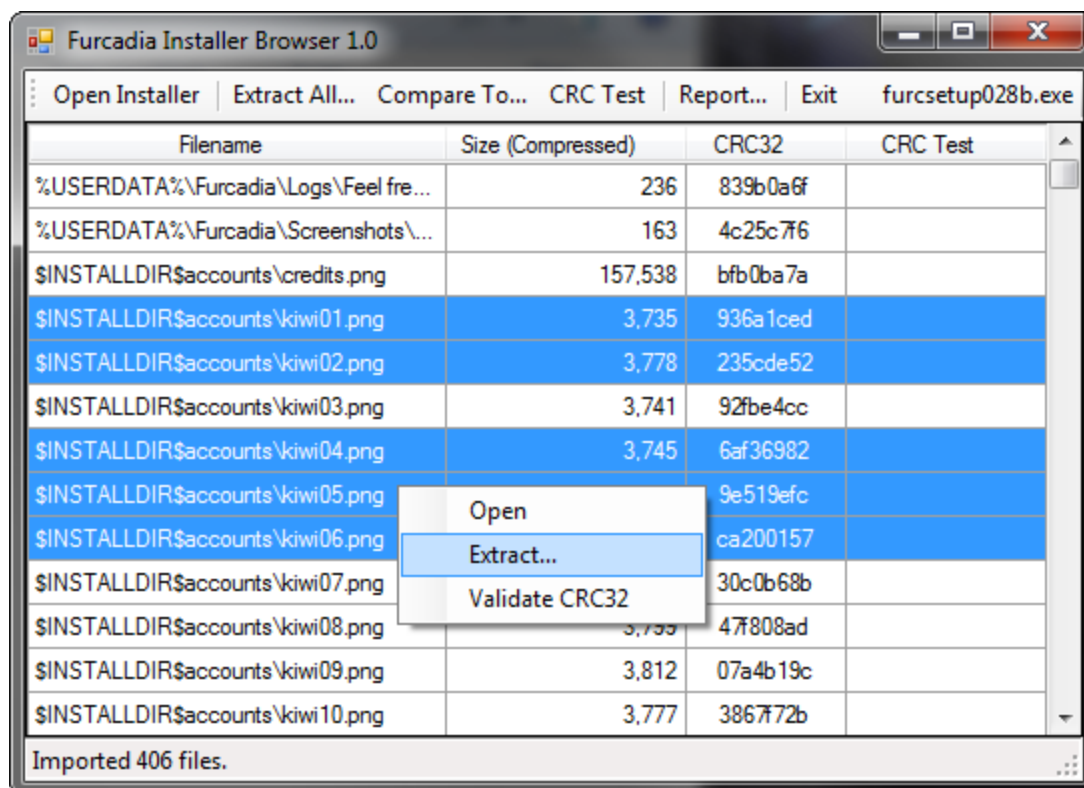
## Using FIB

When you first open the program, you will be presented with the main window, waiting for you to load a Furcadia installer by clicking "Open Installer" or simply dragging the EXE file onto the window.



Once the installer data is loaded, you will see a list of all the files within, and will be able to perform all the operations the program supports:

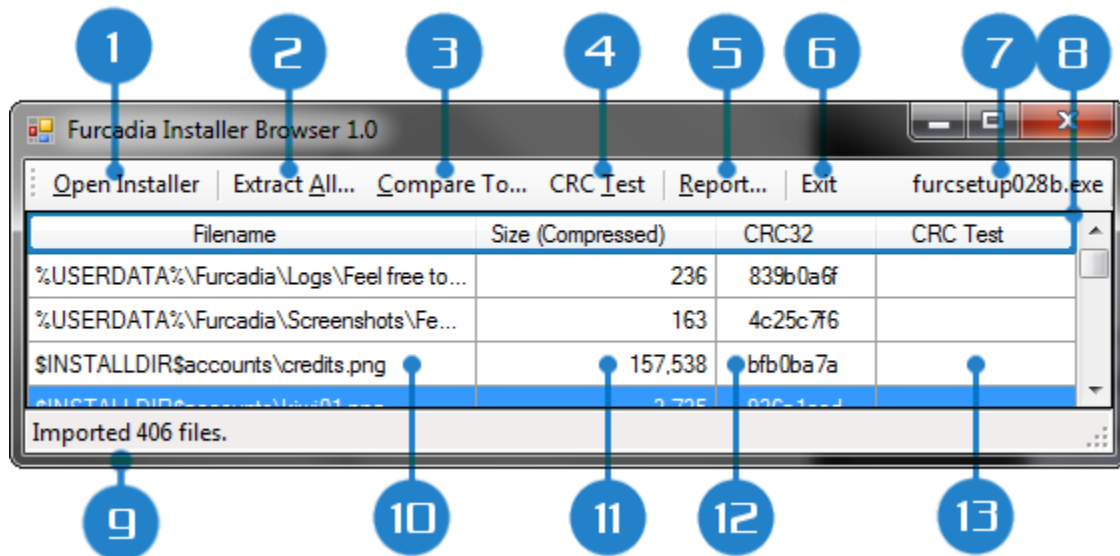
- To sort the list by a specific column, click on the column header (i.e. clicking the "Filename" column header will sort the list by file name as they're written in the column).
- To open a file, simply double-click it in the list, or right-click it and select "Open" in the context menu.
- Extracting files:
  - To extract specific files from the list, select them by clicking the first entry and dragging your mouse up or down, or use CTRL+Click/SHIFT+Click. When done, right-click one of the selected items and pick the "Extract" option.
  - To extract all the files in the install package, click the "Extract All" button above the list.
- Validating file integrity:
  - To check integrity of specific files, select them in the list, right-click on one of the selected items and pick "Validate CRC32" in the context menu.
  - To check integrity of all the files, click the "CRC Test" button above the list.
- To compare the current installer against another one, click the "Compare To" button.
- To get the list of files as formatted text, click the "Report" button.
- To load a different installer, simply drag it into the window, or use the "Open Installer" button. The window will discard the old information and load data from the installer you specified.



## Program Windows

This section will describe in more detail what each window does and what all the controls on it mean.

### Main Window

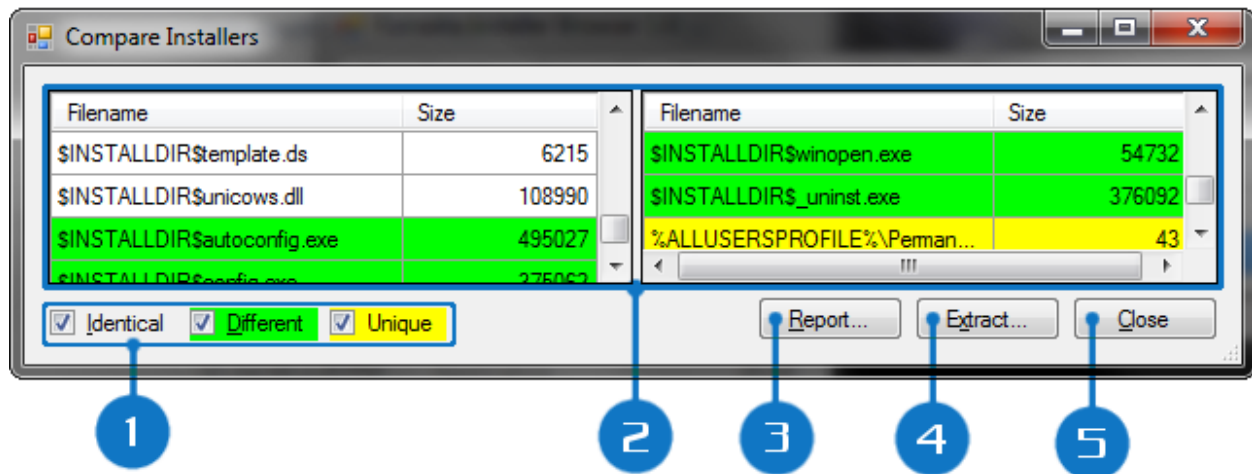


This is the window that you first get when you start the application. Until you load an installer file into it, most of its controls will be disabled.

1. **"Open Installer" Button** - Used to load data from a Furcadia installer into the program. Dragging the installer onto the window is another method to do so.
2. **"Extract All" Button** - Used to extract all the files in the list to a specific location. Variables like %USERDATA% or \$INSTALLDIR\$ become regular folders in the target destination. To extract only the selected files, select them, right-click on one of the selected items and pick the "Extract" option.
3. **"Compare To" Button** - Used to compare the currently loaded installer to another installer. If the installers differ in content, the "Compare Installers" window will open with the details on the difference. If the content is identical, you get a simple dialog saying so.
4. **"CRC Test" Button** - Used to perform an integrity check against all the files within the installer. The results of the check will be visible in the "CRC Test" column of the list. To check the integrity only for specific files, select them, right-click on one of the selected items and pick the "Validate CRC32" option.
5. **"Report" Button** - Pops up a Report window with the information displayed as formatted text. You can edit the text, copy/paste it elsewhere, or save it as a text file.
6. **"Exit" Button** - Does the same thing as the "X" button on the title bar - closes the application.
7. **Current Installer Name** - Filename of the currently loaded installer.
8. **Column Headers** - Shows you what is what and allows you to re-sort the list.
  1. **Filename** - Full filename of each file stored in the installer.

2. **Size (Compressed)** - Size of each file in its compressed (BZip2) form.  
When extracted, these files will be bigger.
3. **CRC32** - CRC32 checksum of each file, used for integrity checks.
4. **CRC Test** - Status of an integrity check ran against each file (PASS/FAIL).
9. **Status Bar** - Displays the application status.
10. **Filename Cell** - Displays the filename, allows for individual file selection (click&drag, CTRL+Click, SHIFT+Click) and operations against just the selected items.
11. **File Size Cell** - Displays the file size in bytes. The size represents the file in its compressed state.
12. **CRC32 Cell** - A 32-bit checksum of the data in its decompressed state.
13. **CRC Test Cell** - Shows integrity check result (PASS/FAIL) or nothing if none taken yet.

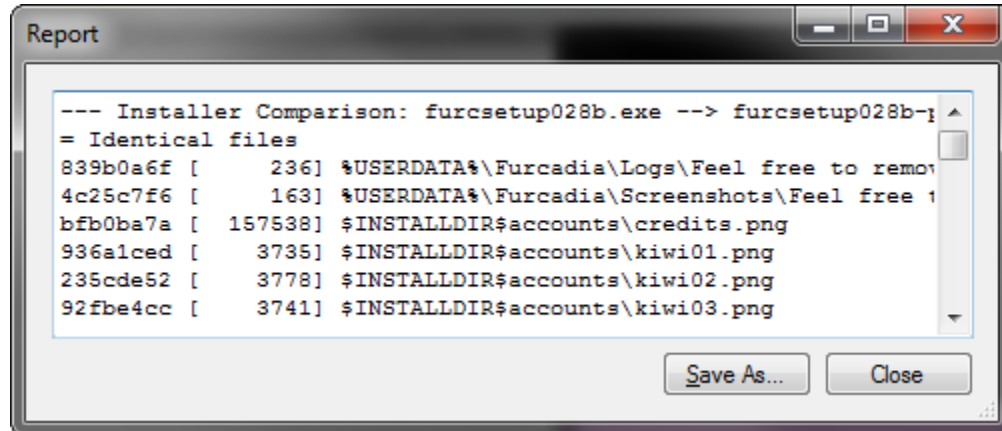
## Compare Installers Window



The comparison window lets you see the difference between the content of two Furcadia installers: which files are the same in both, which exist in both, but the content differs, and which files are unique to that specific installer. The left panel always represents the installer you have loaded into the program. The right panel represents the installer that you want to compare against (the one you loaded by pressing the "Compare To" button).

1. **Display Filters** - Three check-boxes you can toggle to display certain files or ignore them:
  1. **Identical** - Files that exist in both installers and are identical to each other.
  2. **Different** - Files that exist in both installers, yet are different.
  3. **Unique** - Files that only exist in one of the installers.
2. **Split Panel View** - Contains the two lists of files - the left panel represents an installer you loaded to the application and the right panel represents the installer you wanted to compare against.
3. **"Report" Button** - Opens the "Report" window with the details in a formatted text form which can be copy/pasted elsewhere or saved to disk.
4. **"Extract" Button** - Extracts the files in both lists, each to its own folder with the installer's name. The Extract feature here differs from the main window in your ability to extract data from two installers at once rather than one of them. With the filters, you can extract only the different files to compare them more in detail with another tool.
5. **"Close" Button** - Self-explanatory. If an extraction is taking place, this button will abort the procedure and return to the main window.

## Report Window



The report window is a simple text window that presents you with a text version of the reports you see in the other windows. You can edit the text in-place to add personal notes or remove unnecessary data from it, then either copy/paste it to another window, or click "Save As" and save the data in the box as a text file. These features help pass this information without the need to exchange screenshots of lists that would never fit inside them.



